



FAYETTEVILLE PUBLIC WORKS COMMISSION

PROCUREMENT DEPARTMENT

<https://www.faypwc.com/bids/>

Addendum

**PWC Number:** PWC2425033

**Title :** Pump Installation, Service, and Repair

**Due Date and Time:** November 21, 2024 @ 4:00 pm

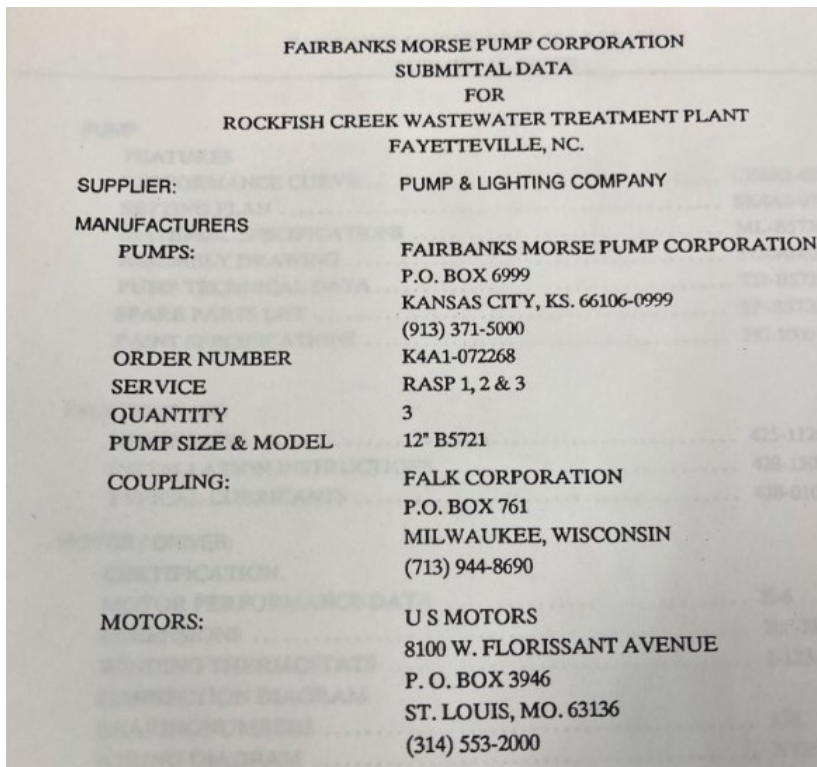
**Addendum Number:** 2

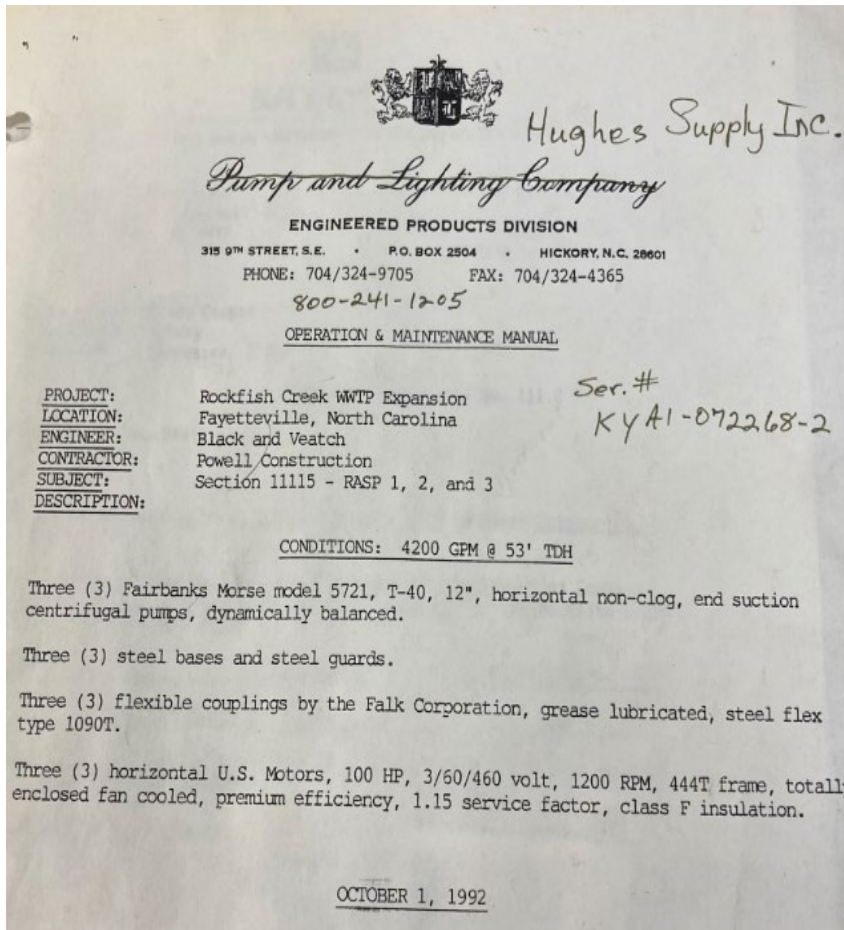
**Addendum Date:** November 14, 2024

**Procurement Advisor:** *Shelby Lesane*

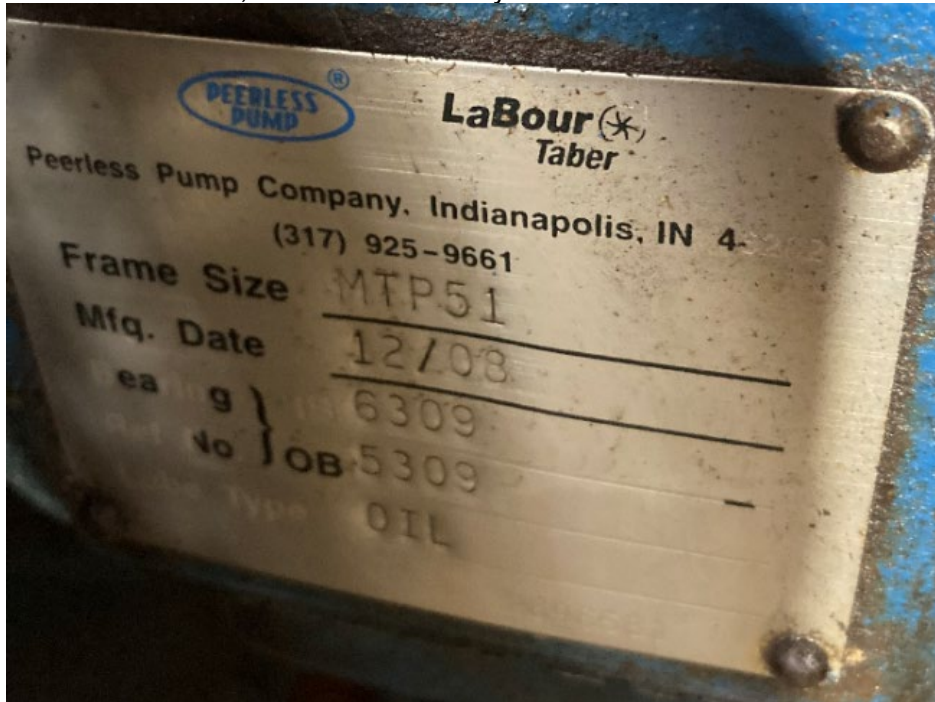
[procurement@faypwc.com](mailto:procurement@faypwc.com)

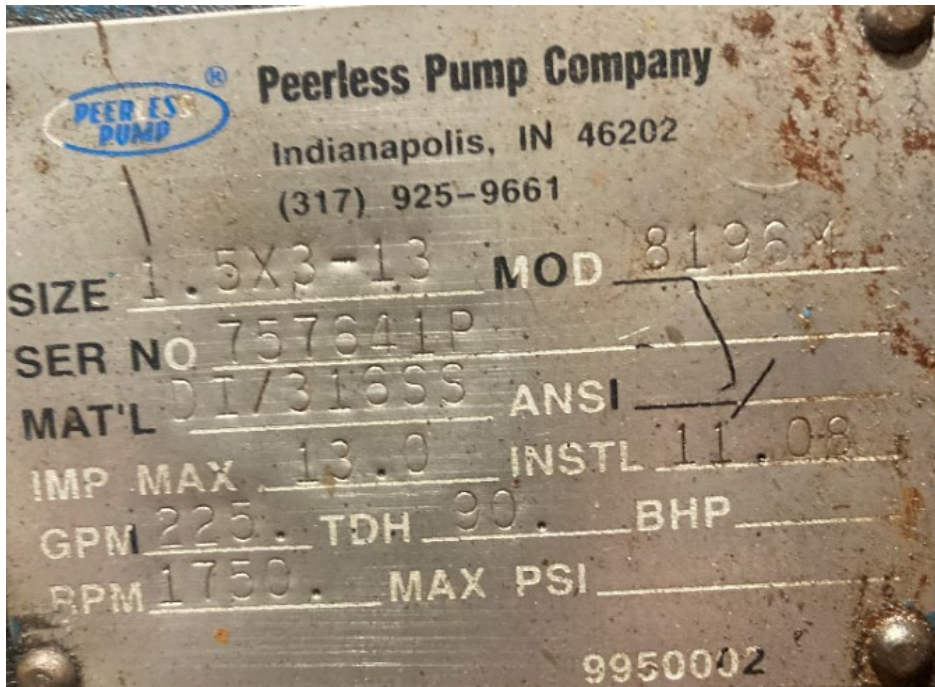
1. This addendum does not need to be returned.
  
2. Following are questions received about the solicitation and the SME's answers to the questions.
  - Q.** Question 1-12: Please provide the total head and gallons per minute for all the below items:
  
  - A1.** RAS Pump Rotating Assembly – (Serial Number K4A1-072268) (20240547-A FM 12" Figure B5721 Horizontal rotating assembly):



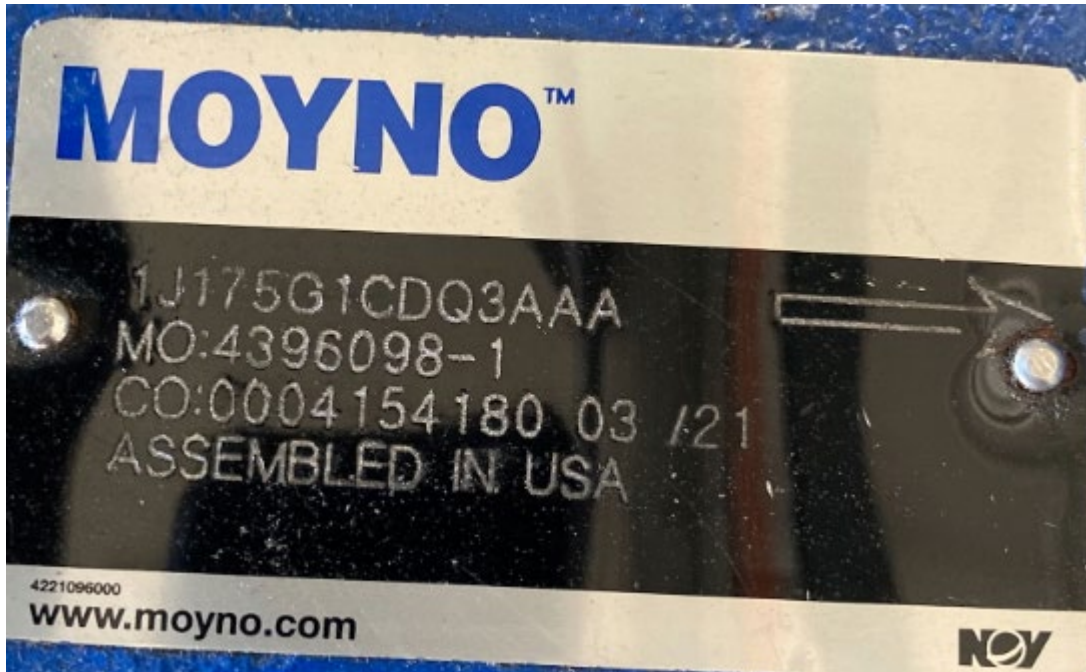


- A2. GBT Booster Pump-Peerless Model 1.5X3 – 13 MTP 8196 (10HP Motor, 1800RPM, 230/40 Volts 215T Frame, Premium Efficiency)





A3. Bare Shaft Pump – MOYNO 2000 1J175G1CDQ3AAA



A4. Submersible Pump – HOMA

**HOMA**  
P U M P T E C H N O L O G Y

Fountain Lake Commerce Park • 390 Birmingham Blvd.  
Ansonia, Connecticut 06401 • www.homapump.com

AMx644-360/70G/C		70
<b>Model Number</b>		<b>Horsepower</b>
529622	460	81
<b>Pump Serial Number</b>	<b>Voltage FL Amps</b>	

For assistance contact your local HOMA Pump dealer:

CRU

---

**Dealer Name**

---

**Phone**

A5. EQ Pump Impeller – FLYGT 481 7216



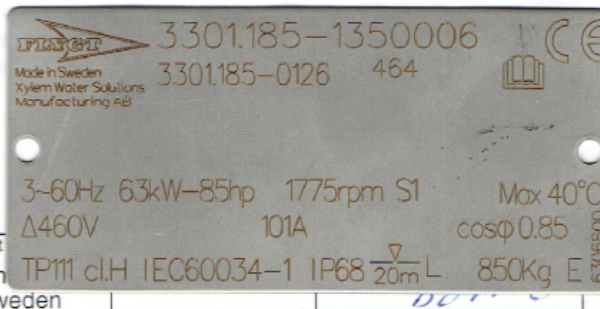
## TEST REPORT

### PRODUCT

Serial No. 3301.185 1350006		Performance curve No. 63- 464-00-0150	Motor module/type 101	Voltage (V) 460
Base module 052	Impeller No. 704 33 20		Imp.diam/Blade angle 370	Water temp °C 22.6

### TEST RESULTS

Pump total head H (ft)	Volume rate of flow Q (USGpm)	Motor input power P (kW)	Voltage U (V)	Current I (A)	Overall efficiency $\eta$ (%)
259.54	0.0	37.88	458	64.1	0.00
222.94	330.1	42.78	459	69.9	32.45
201.22	625.2	48.06	458	76.7	49.38
178.99	957.1	52.94	457	83.3	61.04
156.60	1315.3	58.16	457	90.5	66.80
140.12	1596.9	61.88	457	95.8	68.22
117.70	1948.1	65.29	457	100.7	66.25



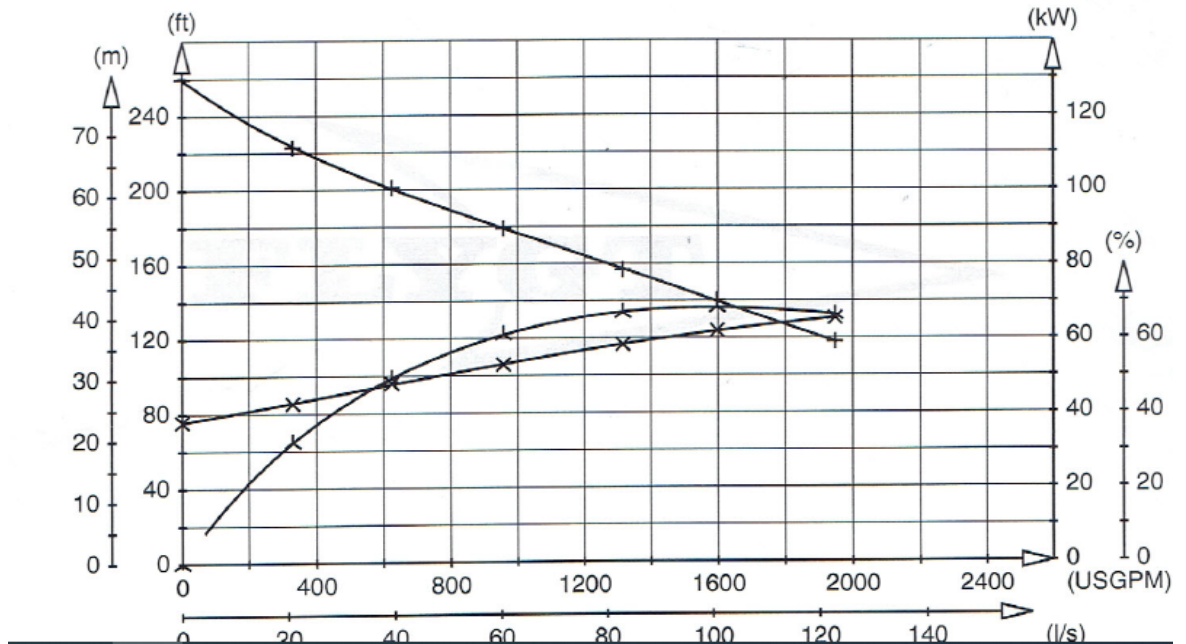
Accepted after HI	Test Lin Sweden	TP111 cl.H IEC60034-1 IP68 20m L 850Kg E
----------------------	-----------------------	--

ORDERNR 605847 POS 1

**PLOTTED TEST RESULTS** Measured point : + = Q/H    Duty point : ◇ = Q/H    Calculated point : △ = Q/ETA overall  
 × = Q/P    □ = Q/P    1  
 △ = Q/ETA overall

**TOTAL HEAD**

**INPUT POWER**



**A6.** End Suction Pump- Aurora Model 344A-BF



**A7.** Frame Mounted End Suction Pump- PACO Model 11-30707

The total head 35" and the gallons per minute is 375.

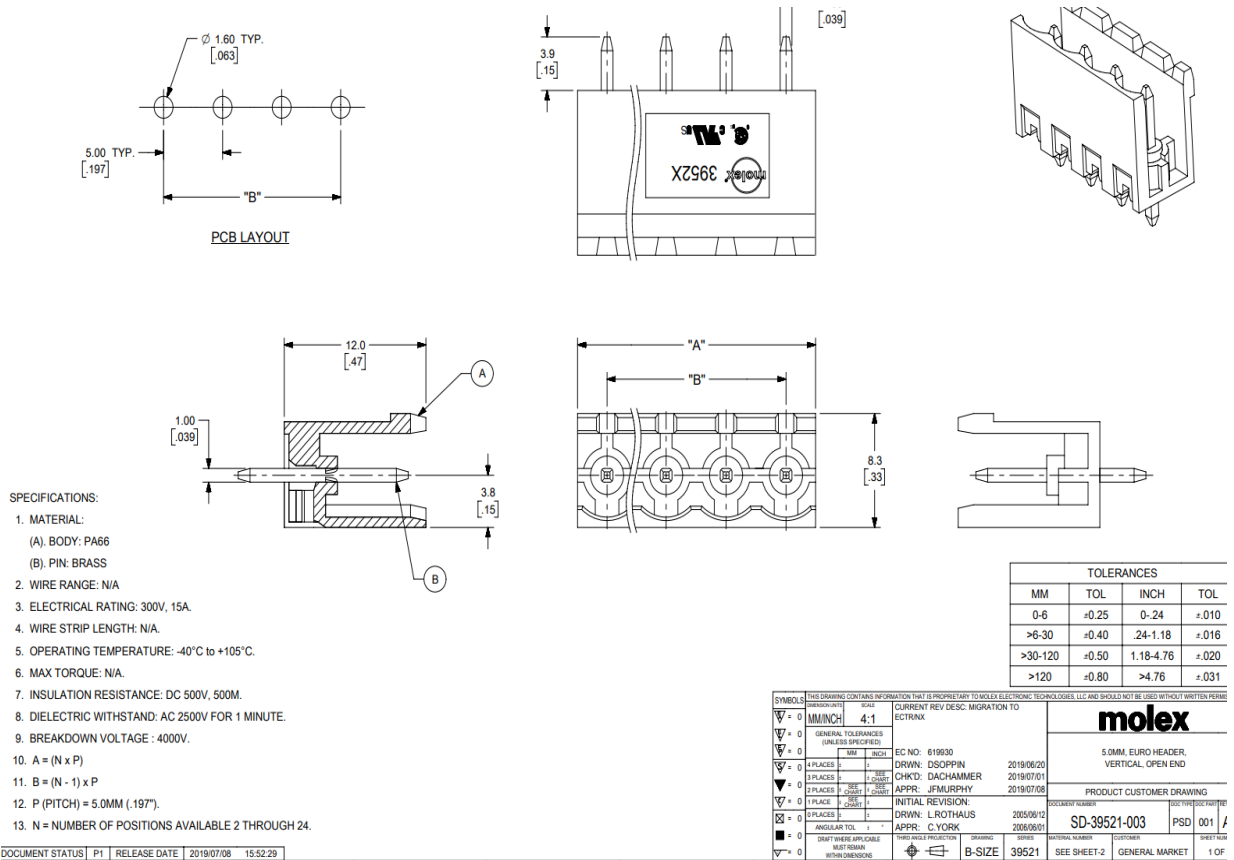
**A8.** Chiller Condenser Pump – PACO Pump Cat # 11-40957-133L01 380 GPM @ 43" TDH

The total head is 43" and the gallons per minute is 380.

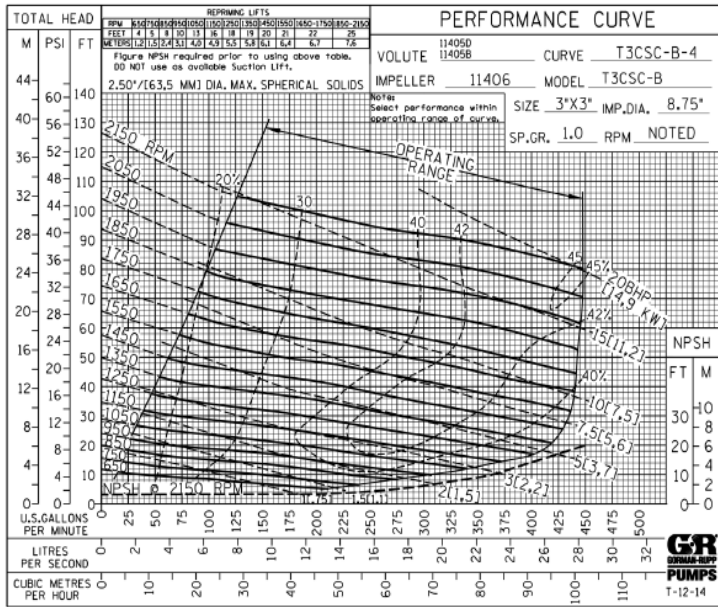
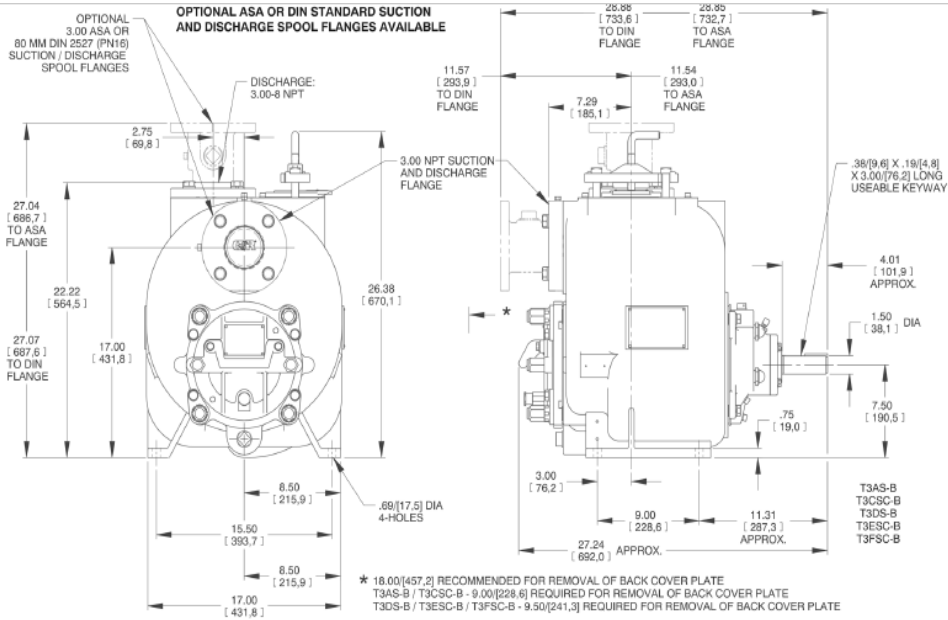
**A9.** Pump Control Valve – Cla-Val 60-51 BY KC DS 150AG



**A10** Buffalo Forge Pump – Model 39521-003, Size 3

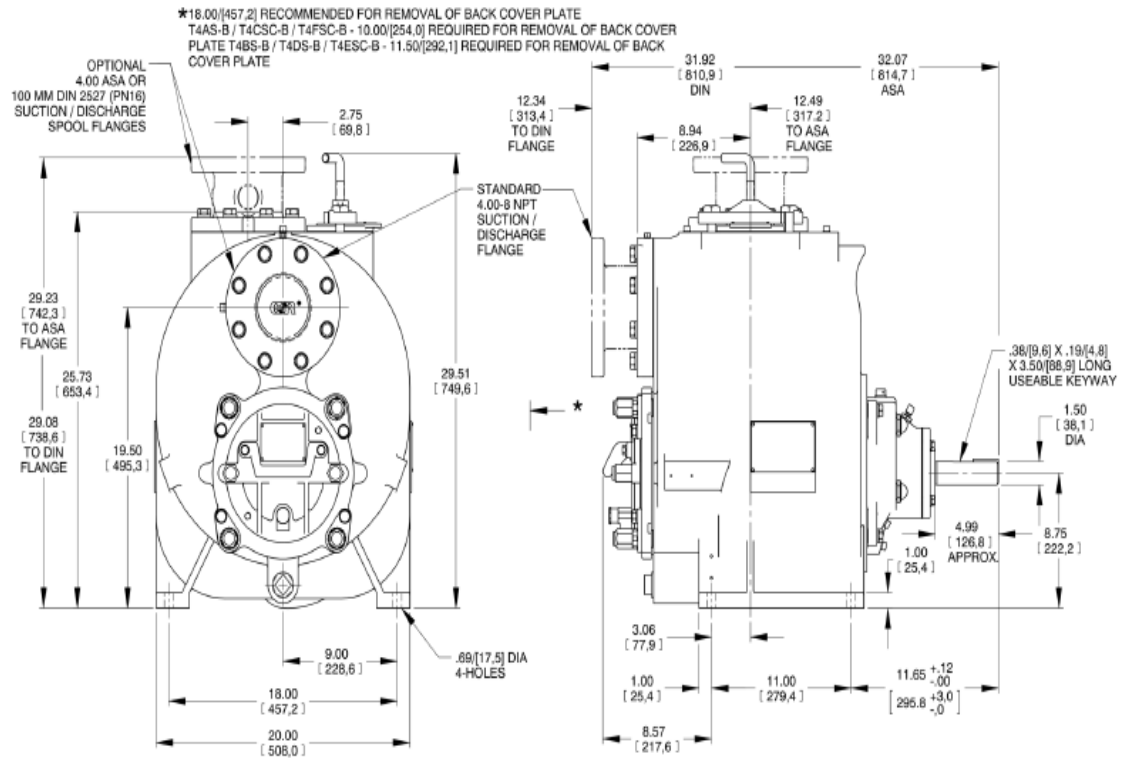


**A11** Sewage Pumps – T3C60SC-B/F PUMP 3IN SUPER – TW/SPPOLS CI W/ERADICATER W/FLANGES



A12

Sewage Pumps – T4C60SC – B/F PUMP 4IN SUPER - TW/SPOOLS CI W/ERADICATER W/FLANGES



NOTE: OPTIONAL ASA OR DIN STANDARD SUCTION & DISCHARGE SPOOL FLANGES AVAILABLE

